

# CONNECT PIPING SOLUTIONS



## — Catalogue — 2025







# Certificate of Registration

## CONNECT PIPING SOLUTIONS

PLOT NO. 54 D, NIT INDUSTRIAL AREA, FARIDABAD,  
HARYANA-121005, INDIA

has been assessed and Certified by Otabu Certification Pvt. Ltd.  
as meeting the requirements of:

**ISO 9001:2015**

**Quality Management System**

For the following scope of activities:

**MANUFACTURING OF ALUMINIUM PIPE & FITTINGS FOR  
COMPRESSED AIR & INERT GASES**

Issue No: 01

Date of Certification: 10 April 2025

1<sup>st</sup> Surveillance Due: 09 April 2026

Revision No( ) : NA

2<sup>nd</sup> Surveillance Due: 09 April 2027

Recertification Due: 09 April 2028

(subject to the company maintaining its system to the  
required standard)

**Certificate Number: 0410Q377725**

Validity of this certificate can be verified at [www.otabucert.com](http://www.otabucert.com)

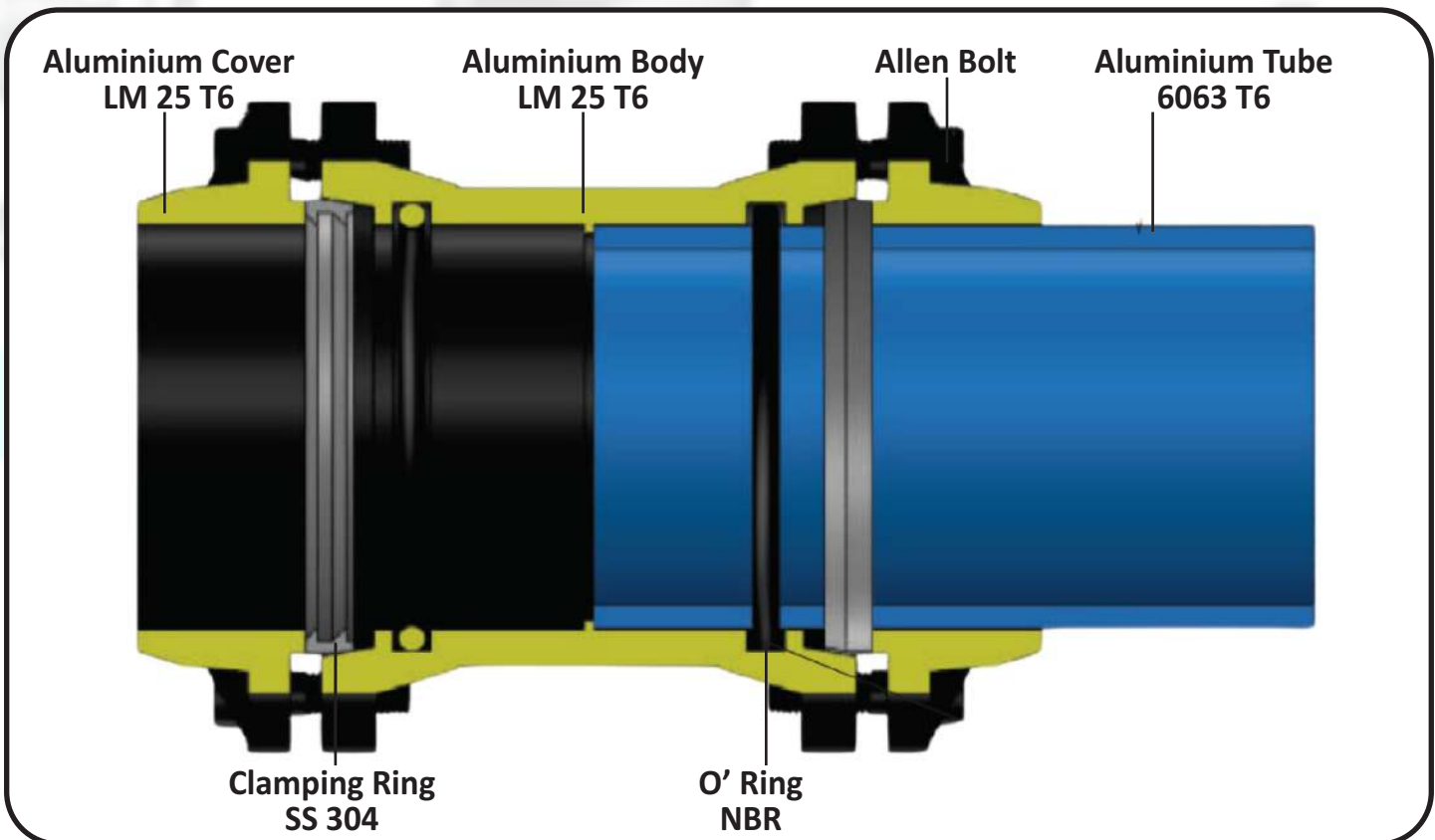
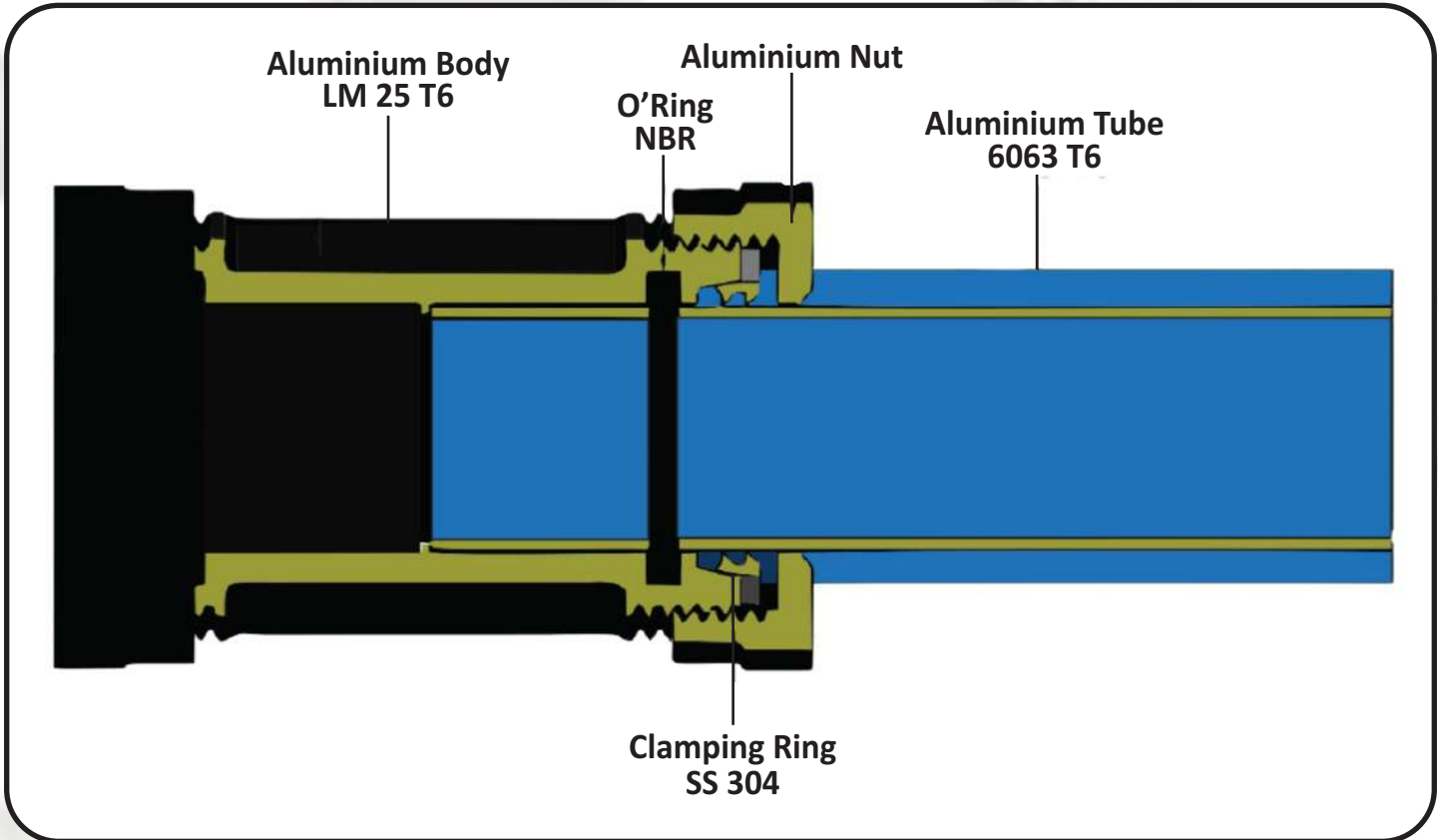


**Dr. Anita Gupta**  
(Managing Director)

\*Validity of the certificate is subject to successful completion of surveillance audit on or before due date (in case surveillance audit is not allowed to be conducted, this certificate shall be suspended/withdrawal). \*This Certificate of Registration remains the Property of Otabu Certification Pvt. Ltd. and shall be returned immediately upon request.

Otabu Certification Pvt. Ltd., RZ-9 (Ground Floor), Prem Nagar, Uttam Nagar, New Delhi-110059 (India)

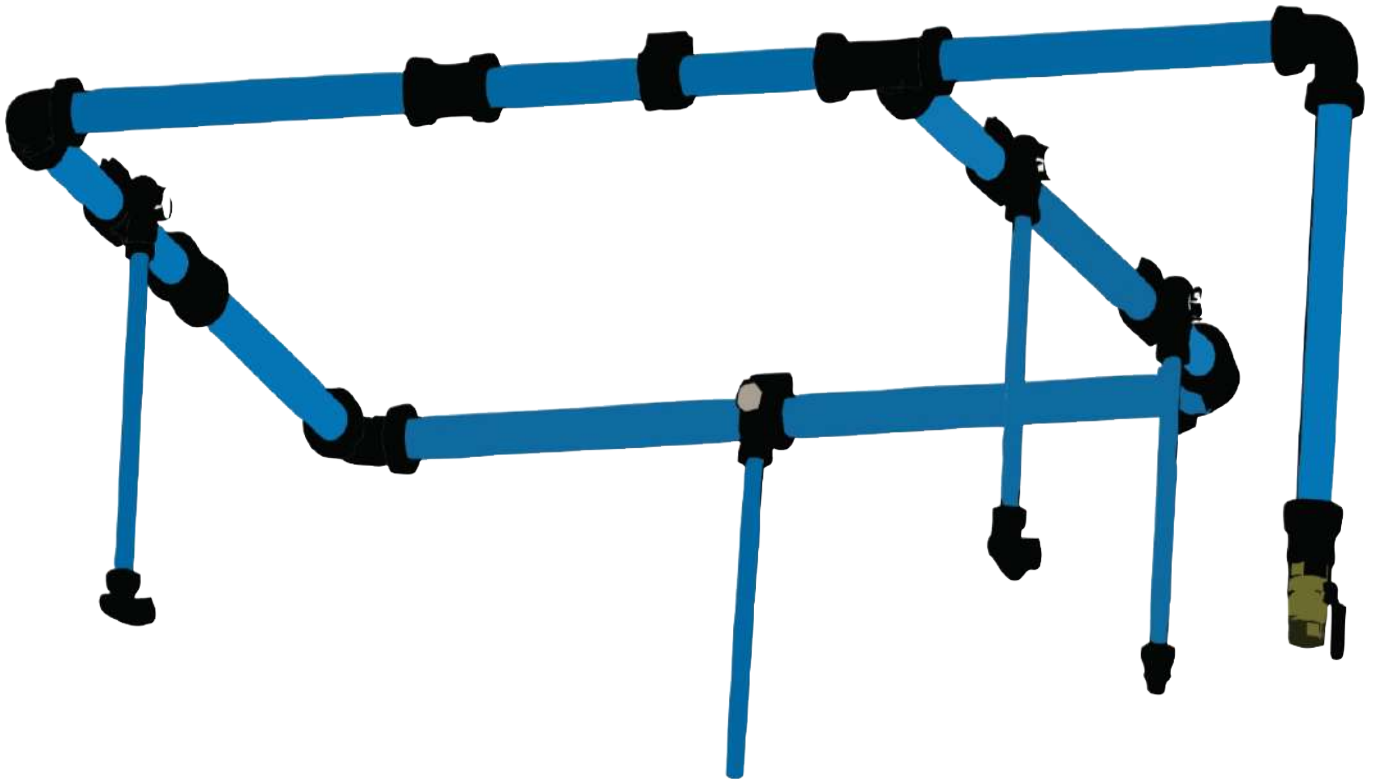
**Email:- [info@otabucert.com](mailto:info@otabucert.com) website:-[www.otabucert.com](http://www.otabucert.com)**





## Technical Characteristics

| Technical Characteristics            | CPS air / gas   |
|--------------------------------------|---|
| Standard Colour of Pipes             | Blue Pipes / Yellow Pipes   |
| Max. Working Pressure                | 15 Bar  |
| 'O' Ring                             | NBR 70  |
| Working Temperature                  | Min 20° C to Max 85° C  |
| Aluminium Pipe Mechanical Resistance | According to En-755-2/2008 standards  |
| Pipe Material                        | Aluminium Allow 6063 T6   |
| Pipe Thickness mm                    | <u>D20-1.6</u> <u>D25-1.6</u> <u>D32-1.6</u> <u>D40-1.65</u> <u>D50-1.8</u> <u>D63-1.8</u> <u>D90-2.5</u> |
| Aluminium Fittings Material          | LM 25 T6  |
| Clamping Ring Material               | Stainless Steel AISI 304  |
| Thread Standard                      | BSPT - British Standard Pipe Taper ISO 7  |
| Coating on Fittings                  | Colour Anodic Coating   |
| Coating on Aluminum Tube             | Pure Polister Powder Coating  |
| Compatibility (Media)                | Compressed Air / Inert Gases  |
| Thread Standard                      | BSPT ISO 7  |
|                                      |   |







## PART NUMBER

## SIZE

## LENGTH



### Aluminium Tube

3000204000

20 mm

4 mtr

3000255000

25 mm

5 mtr

3000325000

32 mm

5 mtr (soon)

3000405800

40 mm

5.8 mtr

3000505800

50 mm

5.8 mtr

3000635800

63 mm

5.8 mtr

3000905800

90 mm

5.8 mtr

3001105800

110 mm

5.8 mtr

3001505800

150 mm

5.8 mtr (soon)



### Male Thread Adaptor

3010 2021

Ø 20x1/2"

Nos

3010 2527

Ø 25x3/4"

Nos

3010 3234

Ø 32x1"

Nos

3010 4042

Ø 40x1.14"

Nos

3010 5052

Ø 50x1 1/2"

Nos

3010 6365

Ø 63x2"

Nos

3010 9087

Ø 90x3"

Nos

3010 110110

Ø 110x4"

Nos

3010 150150

Ø 150x6"

Nos





## Equal Connector

| PART NUMBER | SIZE   | UNIT       |
|-------------|--------|------------|
| 3020 020    | 20 mm  | Nos        |
| 3020 025    | 25 mm  | Nos        |
| 3020 032    | 32 mm  | Nos (soon) |
| 3020 040    | 40 mm  | Nos        |
| 3020 050    | 50 mm  | Nos        |
| 3020 063    | 63 mm  | Nos        |
| 3020 090    | 90 mm  | Nos        |
| 3020 110    | 110 mm | Nos        |
| 3020 150    | 150 mm | Nos (soon) |



## Equal Elbow

|          |        |            |
|----------|--------|------------|
| 3030 020 | 20 mm  | Nos        |
| 3030 025 | 25 mm  | Nos        |
| 3030 032 | 32 mm  | Nos (soon) |
| 3030 040 | 40 mm  | Nos        |
| 3030 050 | 50 mm  | Nos        |
| 3030 063 | 63 mm  | Nos        |
| 3030 090 | 90 mm  | Nos        |
| 3030 110 | 110 mm | Nos        |
| 3030 150 | 150 mm | Nos (soon) |





**Equal  
Tee**

| PART NUMBER | SIZE   | UNIT       |
|-------------|--------|------------|
| 3040 020    | 20 mm  | Nos        |
| 3040 025    | 25 mm  | Nos        |
| 3040 032    | 32 mm  | Nos (soon) |
| 3040 040    | 40 mm  | Nos        |
| 3040 050    | 50 mm  | Nos        |
| 3040 063    | 63 mm  | Nos        |
| 3040 090    | 90 mm  | Nos        |
| 3040 110    | 110 mm | Nos        |
| 3040 150    | 150 mm | Nos (soon) |



**Female Thread  
Tee**

|          |          |            |
|----------|----------|------------|
| 30502021 | 20-1/2"  | Nos        |
| 30502521 | 25-1/2"  | Nos        |
| 30503234 | 32-1"    | Nos (soon) |
| 30504042 | 40-11/4" | Nos        |
| 30505052 | 50-11/2" | Nos        |
| 30506065 | 63-2"    | Nos        |





**Drop  
Saddle**

| PART NUMBER | SIZE  | UNIT |
|-------------|-------|------|
| 3060 2520   | 25x20 | Nos  |
| 3060 4020   | 40x20 | Nos  |
| 3060 5020   | 50x20 | Nos  |
| 3060 6320   | 63x20 | Nos  |
| 3060 6325   | 63x25 | Nos  |



**Saddle  
Branch**

|            |         |            |
|------------|---------|------------|
| 3070 2521  | 25-1/2" | Nos        |
| 3070 4021  | 40-1/2" | Nos        |
| 3070 4027  | 40-3/4" | Nos        |
| 3070 5027  | 50-3/4" | Nos        |
| 3070 5034  | 50-1"   | Nos        |
| 3070 6327  | 63-3/4" | Nos        |
| 3070 9034  | 63-1"   | Nos        |
| 3070 9065  | 90-2"   | Nos        |
| 3070 11021 | 110-2"  | Nos        |
| 3070 11087 | 110-3"  | Nos        |
| 3070 15065 | 150-2"  | Nos (soon) |
| 307015087  | 150-3"  | Nos (soon) |







**Reducer**

| PART NUMBER | SIZE    | UNIT |
|-------------|---------|------|
| 3080 2520   | 25x20   | Nos  |
| 3080 4020   | 40x20   | Nos  |
| 3080 4025   | 40x25   | Nos  |
| 3080 5025   | 50x25   | Nos  |
| 3080 6340   | 63x40   | Nos  |
| 3080 9063   | 90x63   | Nos  |
| 3080 11090  | 110x90  | Nos  |
| 3080 15090  | 150x90  | Nos  |
| 3080 150110 | 150x110 | Nos  |



**End Plug**

|          |        |            |
|----------|--------|------------|
| 3090 020 | 20 mm  | Nos        |
| 3090 025 | 25 mm  | Nos        |
| 3090 032 | 32 mm  | Nos (soon) |
| 3090 040 | 40 mm  | Nos        |
| 3090 050 | 50 mm  | Nos        |
| 3090 063 | 63 mm  | Nos        |
| 3090 090 | 90 mm  | Nos        |
| 3090 110 | 110 mm | Nos        |
| 3090 150 | 150 mm | Nos (soon) |





| PART NUMBER | SIZE  | UNIT       |
|-------------|-------|------------|
| 3100 020    | 20 mm | Nos        |
| 3100 025    | 25 mm | Nos        |
| 3100 032    | 32 mm | Nos (soon) |
| 3100 040    | 40 mm | Nos        |
| 3100 050    | 50 mm | Nos        |
| 3100 063    | 63 mm | Nos        |
| 3100 090    | 90 mm | Nos        |



**Inline  
Ball-Valve**



|           |         |     |
|-----------|---------|-----|
| 3110 2021 | 20x1/2" | Nos |
|-----------|---------|-----|

**Manifold**





**Tube Clamp**

| PART NUMBER | SIZE   | UNIT       |
|-------------|--------|------------|
| 3120 020    | 20 mm  | Nos        |
| 3120 025    | 25 mm  | Nos        |
| 3120 032    | 32 mm  | Nos (soon) |
| 3120 040    | 40 mm  | Nos        |
| 3120 050    | 50 mm  | Nos        |
| 3120 063    | 63 mm  | Nos        |
| 3120 090    | 90 mm  | Nos        |
| 3120 110    | 110 mm | Nos        |
| 3120 150    | 150 mm | Nos (soon) |



**Female-thread  
Ball-valve**

|          |        |     |
|----------|--------|-----|
| 31302121 | 1/2"   | Nos |
| 31302727 | 3/4"   | Nos |
| 31303434 | 1"     | Nos |
| 31304242 | 1 1/4" | Nos |
| 31305252 | 1 1/2" | Nos |
| 31306565 | 2"     | Nos |
| 31308787 | 3"     | Nos |





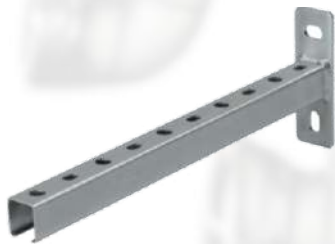


**Butterfly Valve**

| PART NUMBER | SIZE | UNIT |
|-------------|------|------|
|-------------|------|------|

|          |    |     |
|----------|----|-----|
| 31310110 | 4" | Nos |
|----------|----|-----|

|          |    |     |
|----------|----|-----|
| 31310150 | 6" | Nos |
|----------|----|-----|



**T-Channel**

|          |     |     |
|----------|-----|-----|
| 31320300 | 12" | Nos |
|----------|-----|-----|



**Tube Cutter**

|           |       |     |
|-----------|-------|-----|
| 313302063 | 20-63 | Nos |
|-----------|-------|-----|

|           |        |     |
|-----------|--------|-----|
| 313350125 | 50-125 | Nos |
|-----------|--------|-----|



**Beam Clamp**

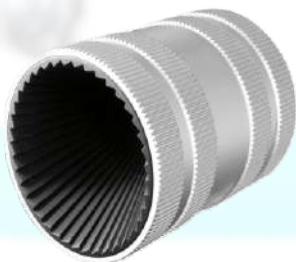
|          |          |     |
|----------|----------|-----|
| 31340018 | Max 18mm | Nos |
|----------|----------|-----|





**Bush  
Reducer**

| PART NUMBER | SIZE          | UNIT |
|-------------|---------------|------|
| 31352113    | 1/2"-1/4"     | Nos  |
| 31352721    | 3/4-1/2"      | Nos  |
| 31353421    | 1"-1/2"       | Nos  |
| 31353427    | 1"-3/4"       | Nos  |
| 31354227    | 1 1/4"-3/4"   | Nos  |
| 31354234    | 1 1/4"-1"     | Nos  |
| 31355234    | 1 1/2"-1"     | Nos  |
| 31355242    | 1 1/2"-1 1/4" | Nos  |
| 31356534    | 2"-1"         | Nos  |
| 31356542    | 2"-1 1/4"     | Nos  |
| 31356552    | 2"-1 1/2"     | Nos  |
| 31382050    | 20-50         | Nos  |



**Deburring  
Tool**



**PART NUMBER****SIZE****UNIT**

31360021

1/2"

Nos

31360027

3/4"

Nos

31360034

1"

Nos

31360052

1 1/2"

Nos

**Hole Saw  
Cutter**

31372520

25-20

Nos

31374020

40-20

Nos

31376320

63-20

Nos

**Spanner**







The logo for CONNECT is a large, stylized letter 'C' composed of two interlocking paths. The left path is grey and the right path is blue. The word 'CONNECT' is written in white, bold, outlined capital letters across the center of the 'C'. A registered trademark symbol (®) is located at the top right of the letter 'T'.

# CONNECT<sup>®</sup>

 [www.connectpiping.com](http://www.connectpiping.com)

 [info@connectpiping.com](mailto:info@connectpiping.com)

 Office/Works : Plot 54-D, NIT Industrial Area,  
Faridabad-121005, Haryana, (India)



[www.connectpiping.com](http://www.connectpiping.com)